

Data Governance and Management for Better Transportation Decisions

FHWA Data Business Plan Peer Exchange

July 08, 2020

Subrat Mahapatra
MDOT SHA Office of Transportation Mobility & Operations (OTMO)

PRESENTATION OUTLINE



MDOT SHA TSMO Data Governance Efforts



MDOT wide Data Governance Efforts



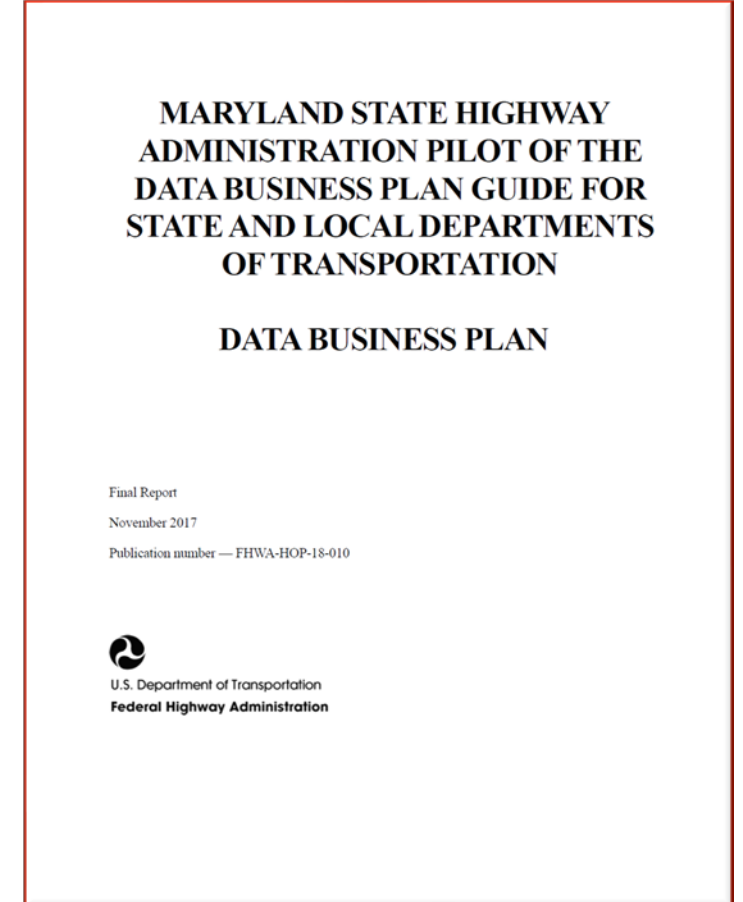
Other Data Governance Initiatives/ Opportunities



MOBILITY/ TSMO DATA BUSINESS PLAN EFFORTS

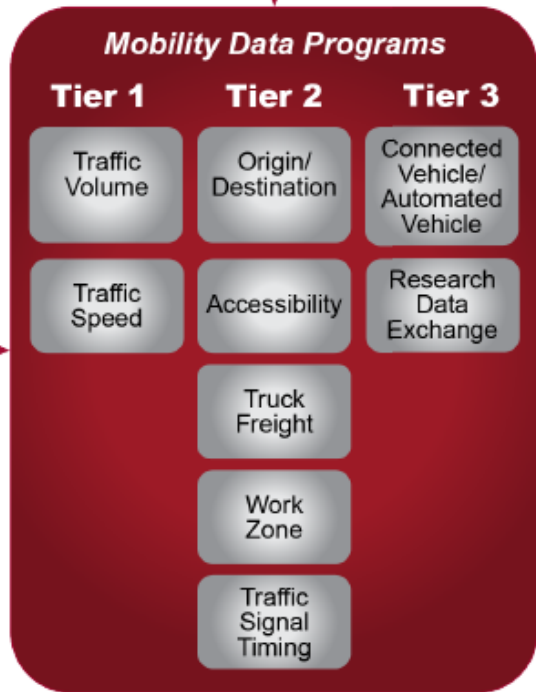
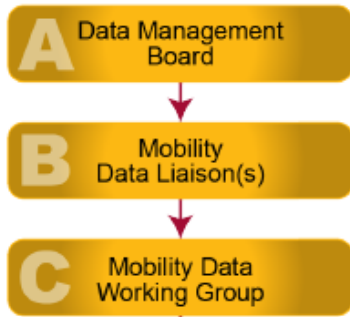
OUTCOMES OF FHWA/ MDOT SHA MOBILITY DBP

- High level action plan for improving mobility data and serve as the TSMO DBP to support TSMO Program
- Example of how other areas within MDOT SHA could approach the process of developing similar plans
- Recommendations for MDOT SHA to enhance data governance activities at an enterprise level



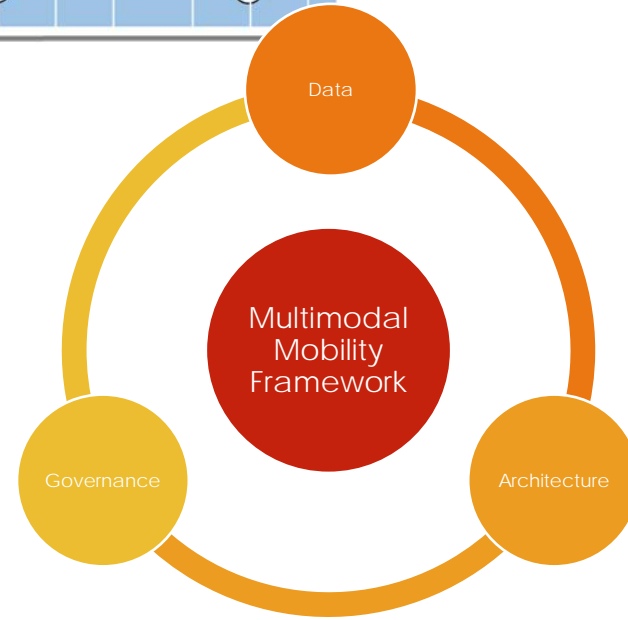
MDOT SHA TSMO DATA GOVERNANCE

Source: 2017 FHWA Data Business Plan – MD Pilot



Maturity Level	Planning						Operations						
	Arterial			Freeway			Arterial			Freeway			
	1	2	3	1	2	3	1	2	3	1	2	3	
Tier 1													
Traffic Volume		●			●		●			●			●
Traffic Speed	●				●			●			●		●

Maturity Level	Planning			Operations		
	1	2	3	1	2	3
Tier 2						
Origin/Destination	●			●		
Accessibility	●			●		
Truck Freight		●			●	
Work Zone	●			●		
Signal Timing	●			●		
Tier 3						
Connected & Automated Vehicle	●			●		



Interaction, structure, and components to integrate and report on mobility data



MDOT DATA GOVERNANCE EFFORTS

DATA...DATA...DATA...

MDOT comprises of six business units and an Authority. Strategic, Tactical, Operational Activities at the TBUs generates a highly complex set of data streams...

Many ways to looks at the Data Streams...

By MODE – Highway, Transit, Air, Water, Other...

By FUNCTION - Planning, Engineering, Operations, Maintenance, Performance Management

By PERFORMANCE AREA – Safety, Mobility, Asset Management, Administrative, Business Transactions

By SOURCE - Internal vs External Data



MDOT DATA GOVERNANCE & DATA HUB

- **Data Governance & Data Hub Overview**
- **Where Do We Want to Be?**
 - Vision, Goals, and Objectives
 - Principles to Guide Implementation
- **What Did We Learn?**
 - MDOT's Current State
 - Gaps in Data Governance
 - Review of Notable Practices
- **What Do We Need to Do?**
 - Develop an MDOT Data Hub
 - Take Action to Address Gaps in Data Governance
- **How Can We Monitor and Evaluate Data Governance Implementation?**



PRINCIPLES & DIMENSIONS TO GUIDE DATA GOVERNANCE IMPLEMENTATION



People

- Staff resources and training
- Organization
- Culture



Processes

- Procedures and documentation
- Accountability and incentives



Technologies

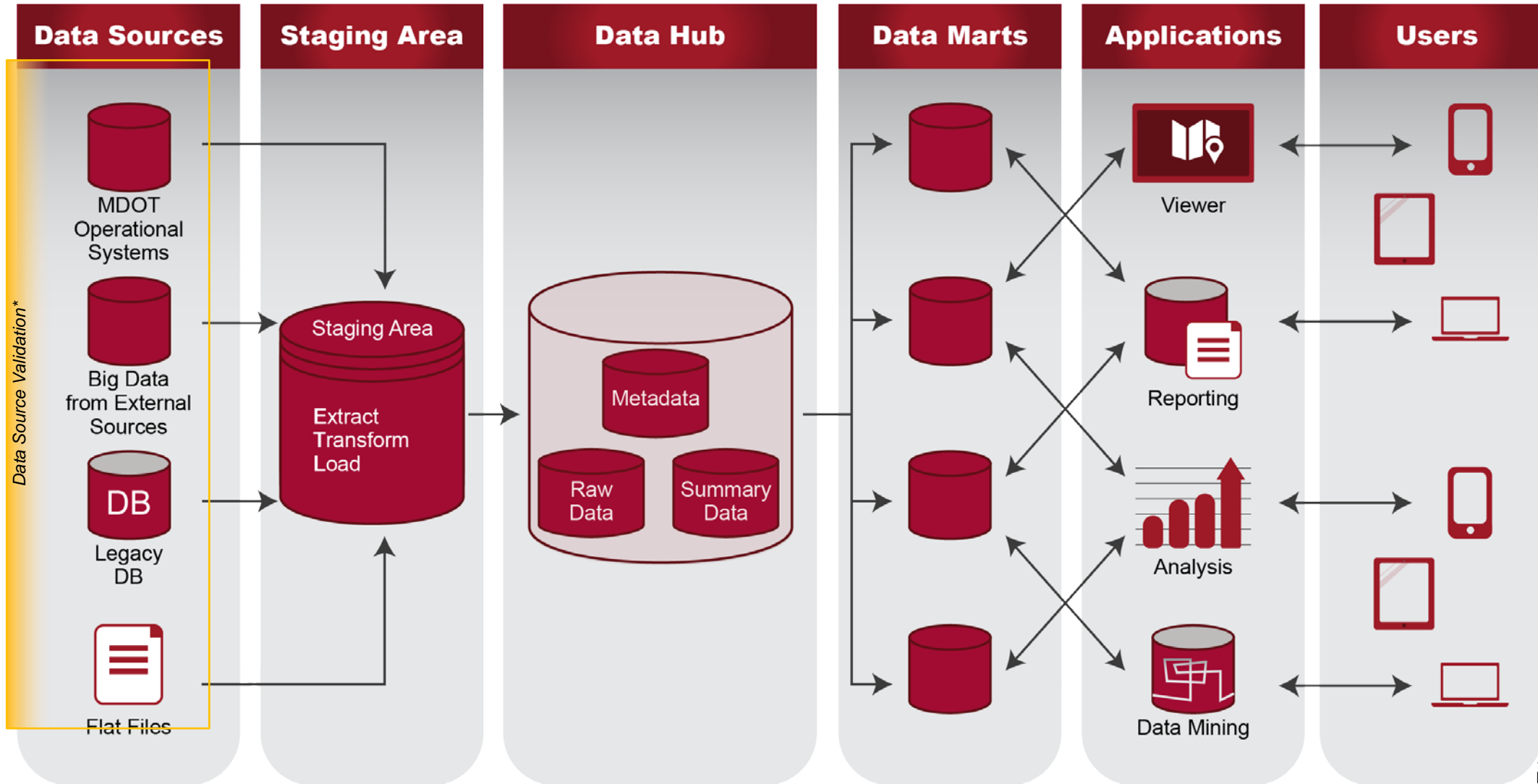
- Data assets
- Information systems
- Tools for Data Governance implementation

1. VALUABLE
2. AVAILABLE
3. VALIDATED
4. SECURED
5. CLEAR
6. EFFICIENT
7. ACCOUNTABLE

AASHTO Reference:

<https://data.transportation.org/>

MDOT DATA HUB – CONCEPTUAL FRAMEWORK





OTHER DATA GOVERNANCE INITIATIVES/ OPPORTUNITIES

MD & MDOT SHA GEOSPATIAL DATA GOVERNANCE & MANAGEMENT



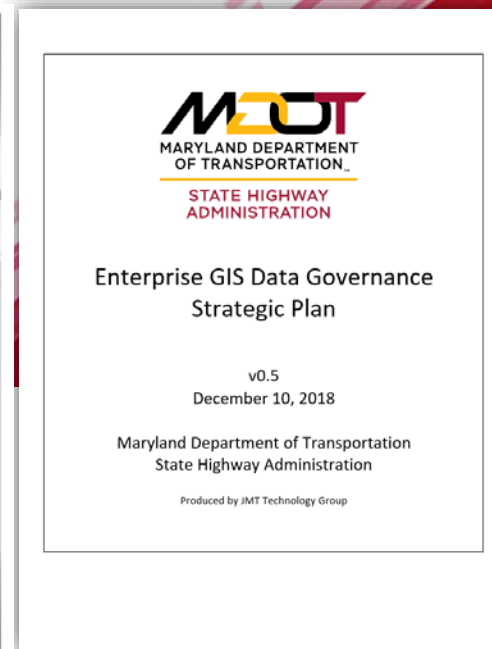
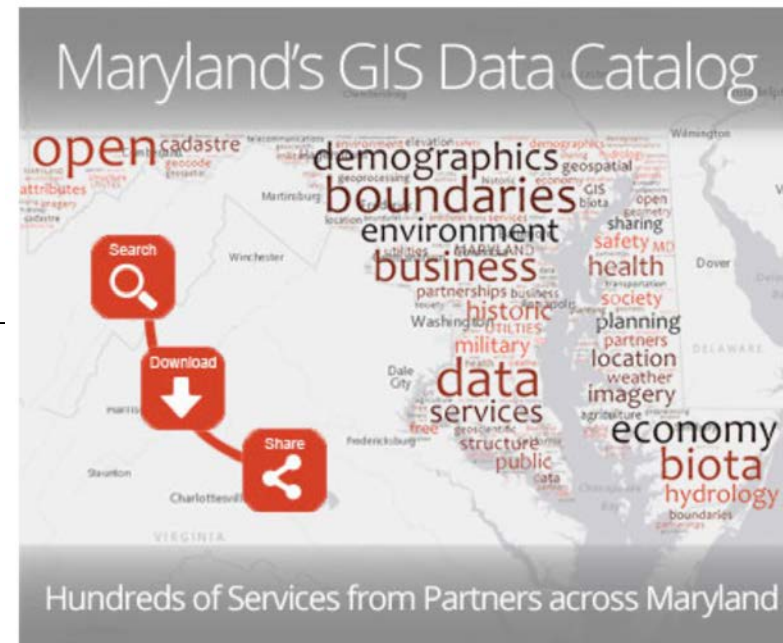
MD iMAP
Maryland's Mapping & GIS Data Portal

Maryland's
OPENDATA
Portal



Policies, standards and procedures to collect, manage, disseminate, utilize, and archive enterprise data and related applications.

- **Data Development**
 - MDOT SHA Geospatial Data Integrity-Data Submission Policy & Procedure
 - Maryland iMap Data Submission Policy
- **Data Sharing & Security**
 - DoIT Account Management Policy
- **Application Development**
 - MDOT SHA Standard Web Map Configuration in AGOL
 - MDOT SHA Web App Documentation in AGOL
- **Enterprise GIS Data Inventory**
 - Documented in standardized template



TRADITIONAL & BIG DATA APPLICATIONS

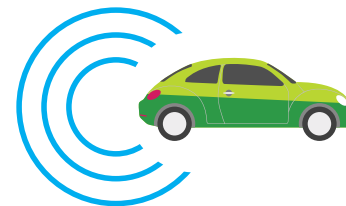
Real time applications

- System Monitoring
- Incident Mgmt.
- ATM/ ICM
- Maintenance/ SOGR

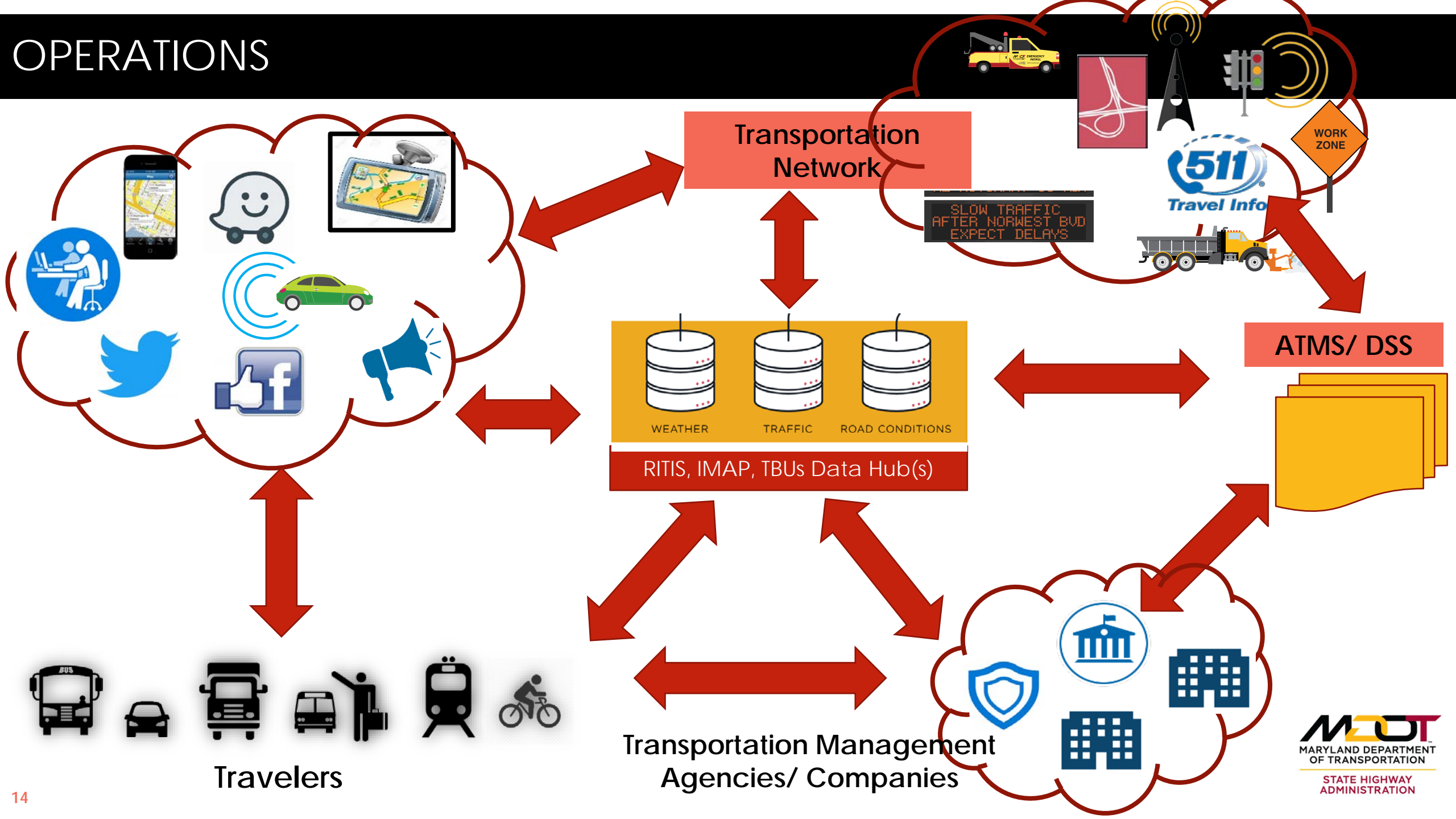
Archived data applications

- Planning/ TSMO
- Asset Management

Performance Management



OPERATIONS



LONG RANGE AND TSMO PLANNING

Planning Data



- Census Data
- DLLR Employment Data
- Auto/Truck Count data
- NHTS/ACS.MPO HTS Data



- TAZ/Block-Level Socioeconomic Data
- Existing/Future Transportation Networks
- Future Investments (CLRP, TIP, CTP, etc.)
- Sector Plans, TODs, Activity Centers, etc.)

Operations Data

- Signal Data
- Lane Configurations
- Probe/Speed Data
- Turning Movements
- Work Zone Limits
- Incident/Safety Data

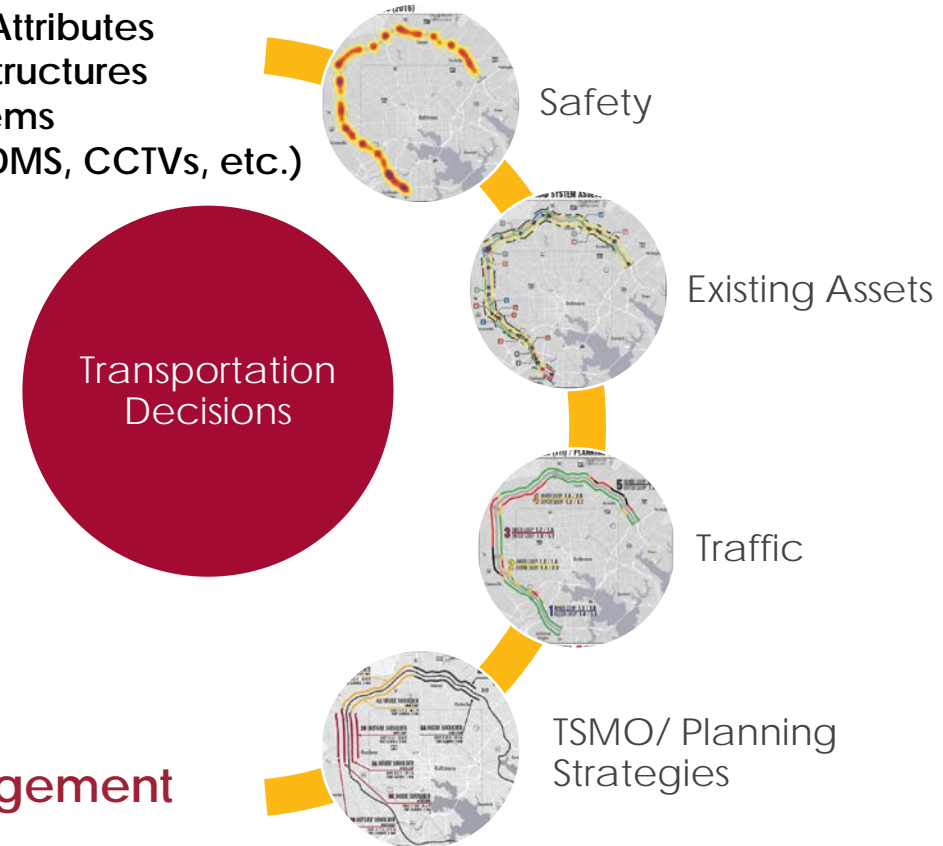


Asset Data

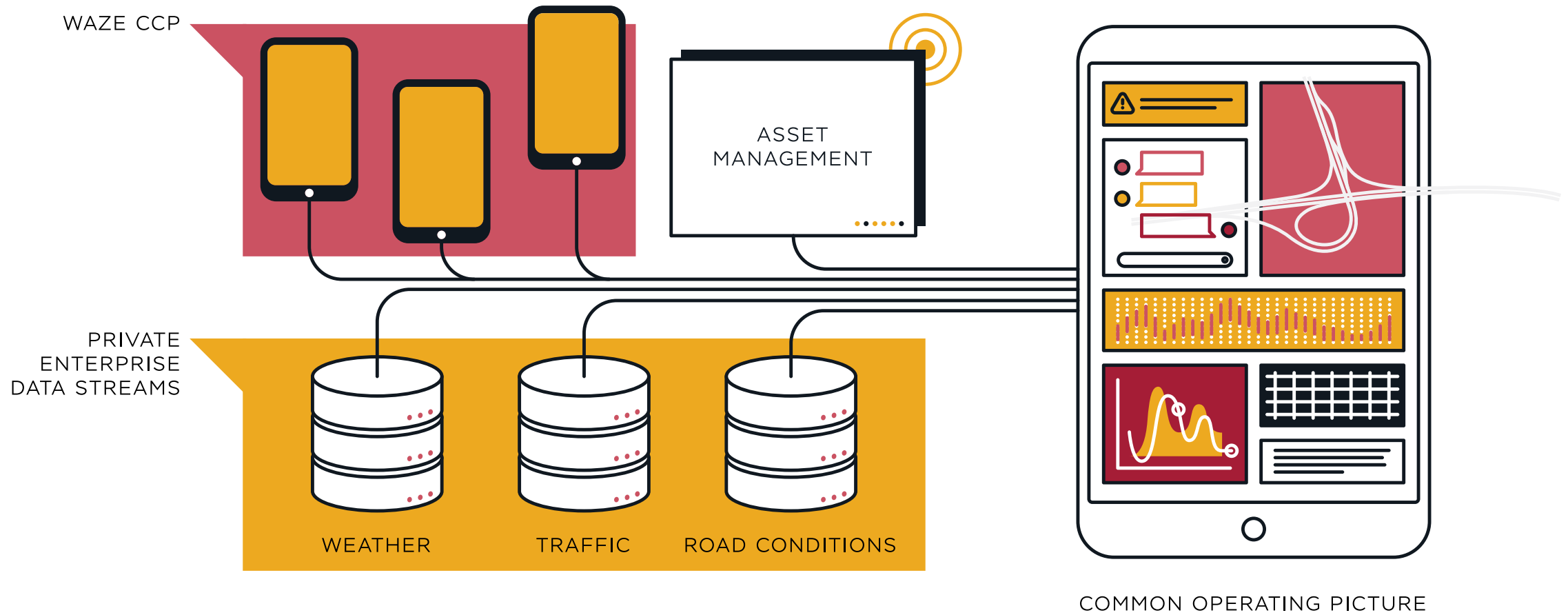
- Centerline Attributes
- Pavement Attributes
- Roadway Structures
- Signal Systems
- ITS Assets (DMS, CCTVs, etc.)

Performance Management

- INFRASTRUCTURE CONDITIONS
- SEGMENT, CORRIDOR & SYSTEM PERFORMANCE



ASSET MANAGEMENT



NEXT STEPS

- Formalize Data Governance Structures for new Data streams
- EDC-5 Crowd Sourcing for Ops (Waze CCP) and Road Weather Management Strategies
- Work with FHWA on WZDx and other data exchanges
- Work with private sector, industry and associations for standardizing CAV and CATS data
- Review and refine Data Management Structures (on prem and/ or cloud services)

→ **QUESTIONS?
THANK YOU!** ←

CONTACT INFORMATION

SUBRAT MAHAPATRA

Deputy Director, TSMO & CATS

Office of Transportation Mobility
& Operations (OTMO)

MDOT State Highway Administration

(410) 582-5569

smahapatra@mdot.maryland.gov